

# ELA NEWS

ela[container]

The customer magazine  
[www.ela-container.com](http://www.ela-container.com)

# NO. 47 AUGUST 2019

ELA information point for a property developer

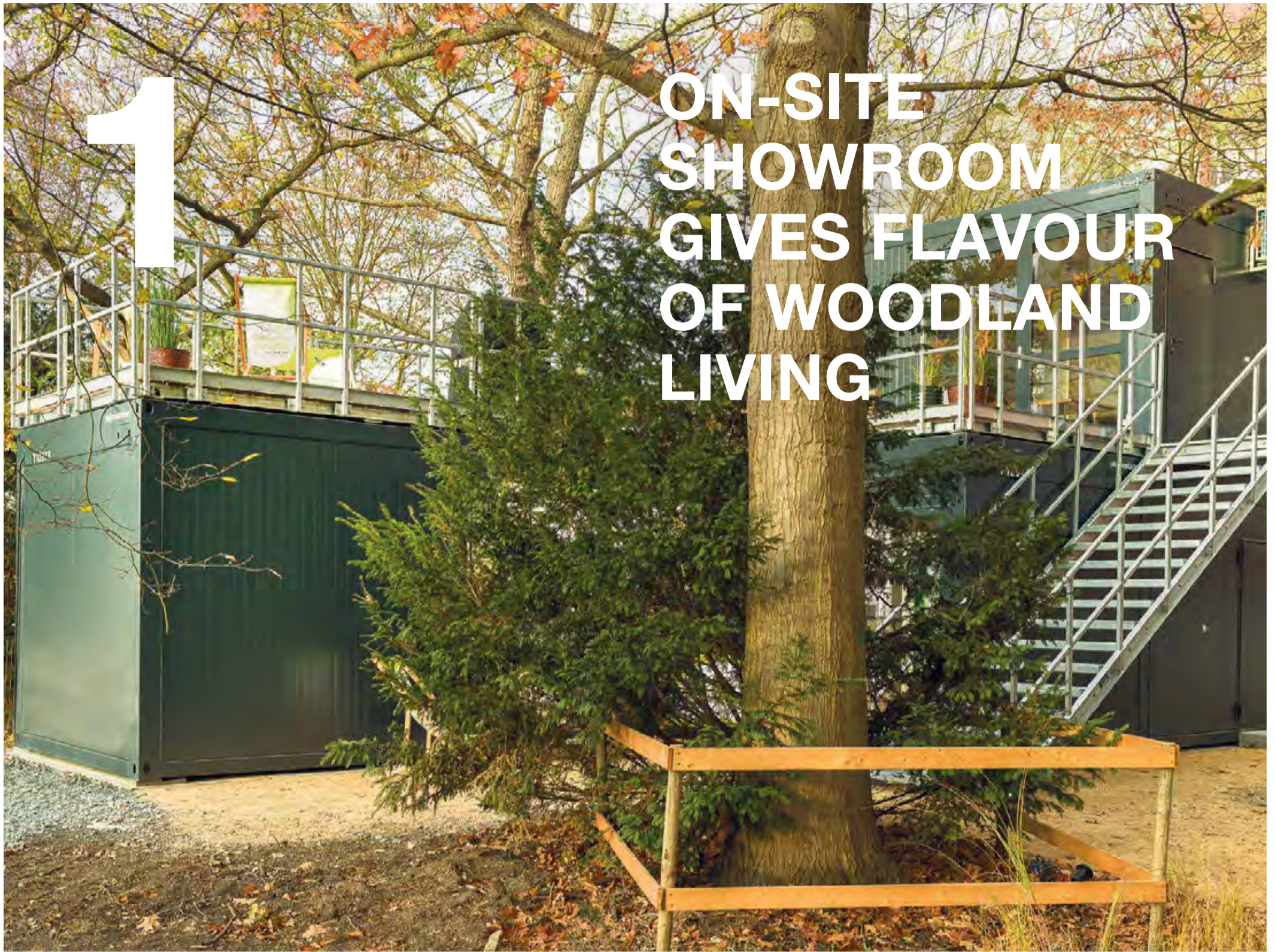


Fig. top

Surrounded by nature: the ELA container facility gives a flavour of living by the forest.

Fig. bottom

The outer steel stairway with stairhead and railing leads to the large terrace.



## ELA information point for a property developer

Living surrounded by nature yet still enjoying the benefits of a city – many people in search of a new home dream of this. In the district of Niederrad in Frankfurt am Main, such domestic dreams can come true, as the company LBBW Immobilien Development GmbH is currently developing the new MAINWALD residential estate directly by the edge of the forest. In order to inform about the project and provide potential residents with an impression of the location and living spaces, the developer has set up an information point with the support of ELA Container.

With its large windows, the two-storey container facility reaches as high as the treetops of the neighbouring forest. Anyone hearing about the benefits of living in the MAINWALD over a drink on the roof terrace here will soon be convinced. “The information point comprised of four specially fitted-out ELA premium containers was designed by the developer to reflect the standard interiors of the family homes that will be built here. These include parquet flooring and plasterboard walls. ELA Container is thereby supporting the sales activities of our customer until next year,” explains ELA Area Sales Manager Oliver Kölblin. The 72 m<sup>2</sup> space contains consultation rooms, a wine bar and an information area with the model of the new houses.

“This ELA room solution is intended to already underscore the premium quality of this development project and give a flavour of living in this location,” explains Kölblin. This is why the containers were prepared with an elegant external coat of anthracite-grey paint and the interior modules were complemented with windows – some of them floor to ceiling – split air conditioning and smoke alarms. A galvanised outer stairway with railings leads to the 36 m<sup>2</sup> roof terrace.

## Details

**Location**  
Frankfurt am Main

**Type and number of containers**  
Four specially fitted-out ELA premium containers

**Floor space**  
Approx. 72 m<sup>2</sup> across two storeys and 36 m<sup>2</sup> terrace

**Use**  
Information point

**Colour**  
Outer walls: Anthracite grey, RAL 7016  
Inner walls and ceiling: White

**Extra equipment**  
Split air-conditioning units to cool and heat, smoke alarms, outer stairway, special windows, glazed external double door, roof terrace, interior furnishings and fittings provided by customer

**Purchased or leased**  
Leased

**Duration of use**  
16 months

**Set-up date**  
December 2018



01



02



03

Fig. 01

The information point also contains consultation rooms with premium-quality furnishings.

Fig. 02

ELA modules provide a good impression of the location and living spaces.

Fig. 03

Another part of the showroom: a fully fitted-out bathroom.

Fig. 04

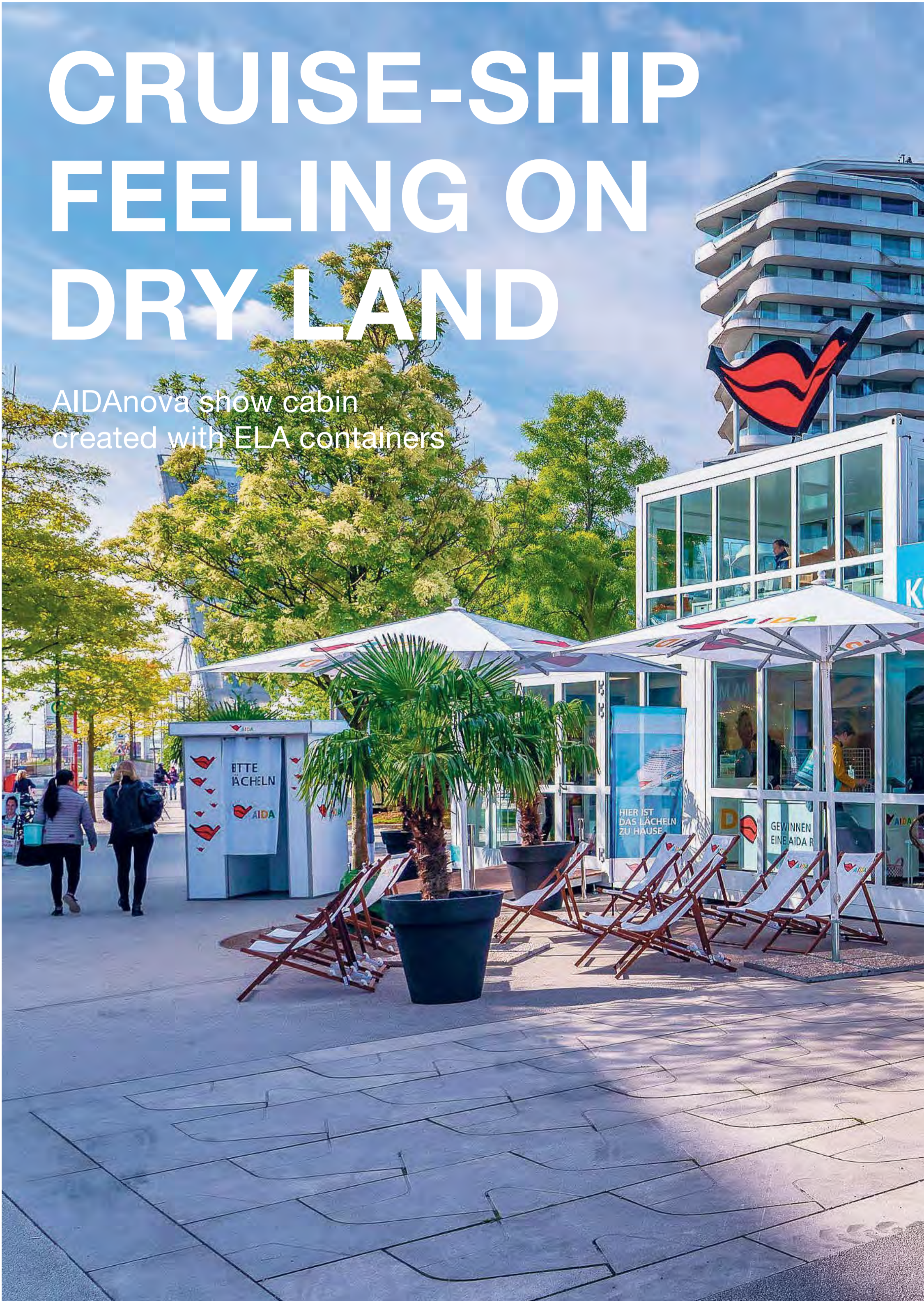
Fully glazed outer walls create a light, friendly atmosphere.



04

# CRUISE-SHIP FEELING ON DRY LAND

AIDAnova show cabin  
created with ELA containers



The AIDAnova show cabin comprised of ELA containers offers completely new worlds of experience for visitors and creates an impressive presentation that includes that special holiday feeling.

# 2





01



02

# “ELA’s trade-fair stands are always eye-catching.”

Thomas Nohrn —  
Area Sales Manager  
ELA Container GmbH



03

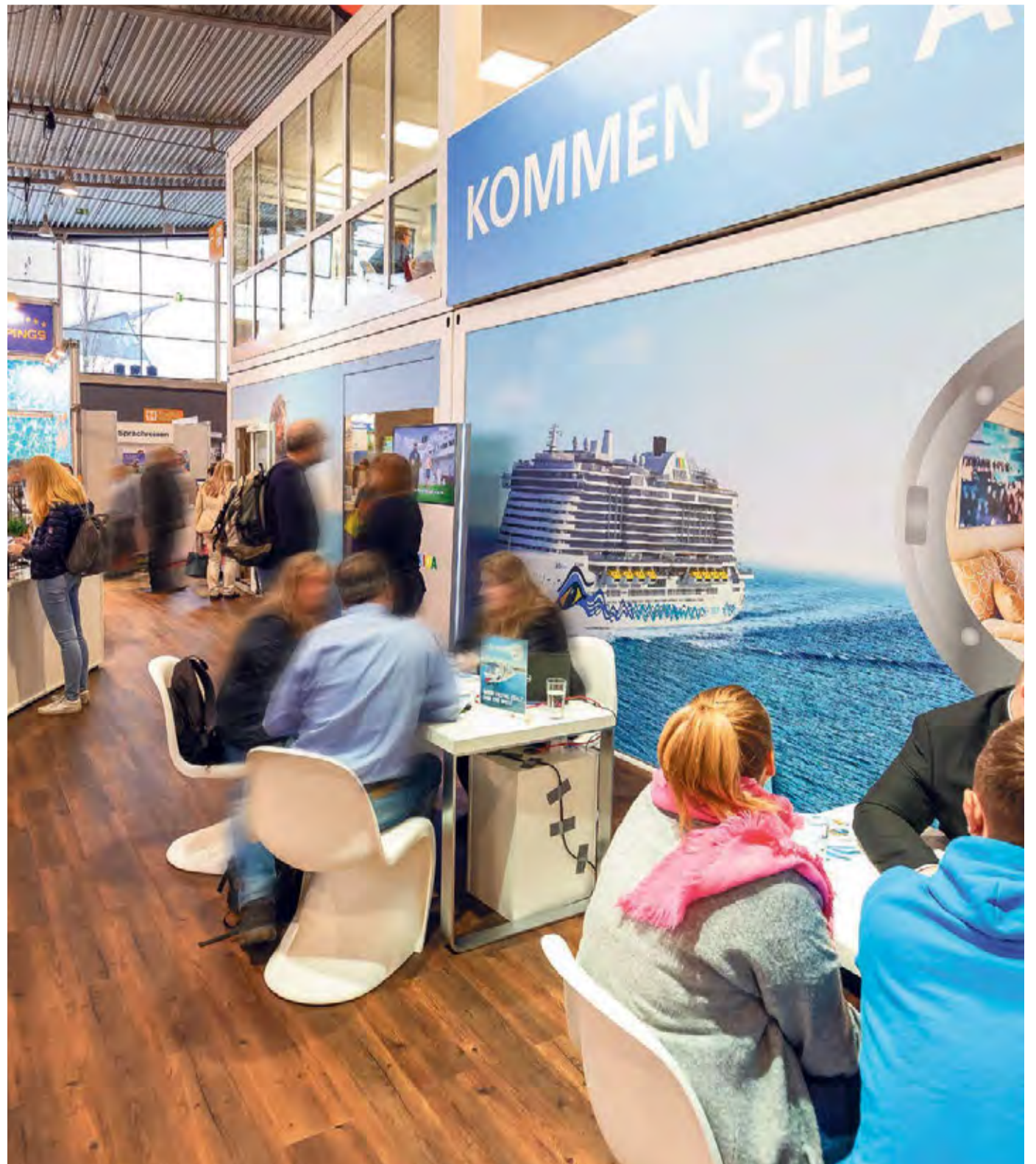


Fig. 01

Workspaces for travel consultants on the top and bottom allow for comprehensive customer service.

Fig. 02

The stackable ELA modules provide large spaces for branding.

Fig. 03

Come aboard. The outer stairway with stairhead, railing and balcony evoke the feeling of being on a ship.

Fig. right

Fully glazed front and side walls on the top floor provide a comprehensive overview.



Fig. top

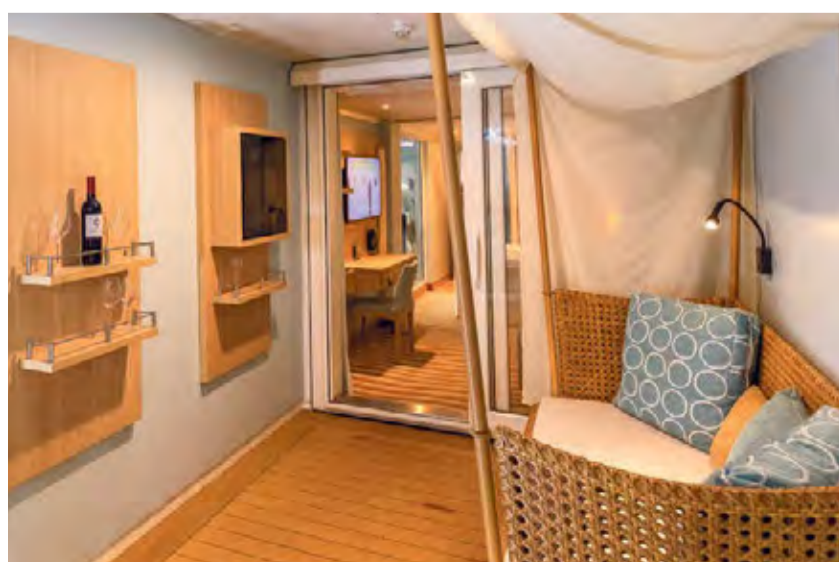
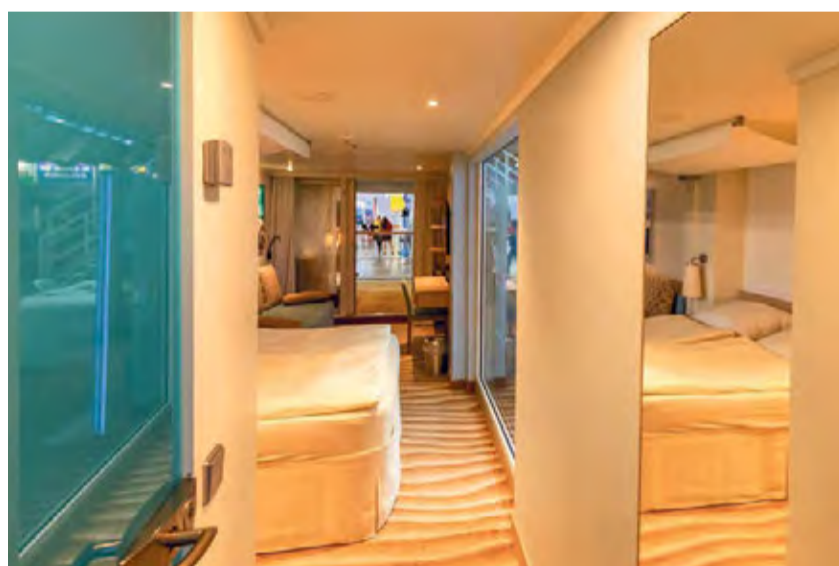
A taste of holiday: the showroom is an accurate replica of the ship's cabin.

Fig. centre

The AIDA brand made tangible – thanks to the container-based room solutions from ELA.

Fig. bottom

A place to live it up in: a replica of the Junior Suite intended to impress customers.



## AIDAnova show cabin created with ELA containers

Cruises are on-trend. Ever more people are spending their holidays on the high seas and enjoying the benefits of a cruise. But what does it feel like to stay in a ship's cabin? The guests of AIDA Cruises can gain an impression of this before they book – by visiting the AIDAnova show cabin made of ELA modules.

“Experiencing that cruise-ship feeling directly and thereby convincing customers – that’s the idea behind this brand presentation from AIDA Cruises,” states Jasper Poensgen. His company JP Mobile Spaces specialises in mobile room solutions for trade fairs and road shows. For the launch of AIDA Cruises’ new class of ship, the company further developed and optimised the mobile AIDAnova show cabin. The result is a show module, based on an ELA trade-fair facility, that contains an accurate replica of the AIDAnova Junior Suite, an information and lounge area, a top floor with workspaces for travel consultants, and a terrace. ELA Area Sales Manager Thomas Nohrn and Christian Schuknecht, a member of the sales team at ELA Groß Ippener, assisted the project work with JP Mobile Spaces. “The ELA facility creates new worlds of experience for a brand-compliant presentation,” says Schuknecht.

In comparison to traditional traverse constructions, the ELA trade-fair containers are easy to prepare and assemble. They create a cosy room-within-a-room atmosphere and offer plenty of spaces for branding. Fully glazed front and side walls give visitors to the top floor a clear view of their surroundings. The bottom floor of the construction is home to the Original AIDAnova show cabin with the “Junior Suite” of the new AIDAnova ship.

## Details

### Location

Trade fairs in Düsseldorf, Hamburg, Kiel, Stuttgart, Zurich, etc.

### Type and number of containers

Three premium containers

### Floor space

Approx. 72 m<sup>2</sup>

### Use

Show cabin for trade fairs

### Colour

Outer walls: Traffic white, RAL 9016  
Inner walls and ceiling: White

### Extra equipment

Fully glazed container on first floor, large terrace, outer stairway with stairhead and railing, balcony, smoke alarm, LED lighting, interior furnishings and fittings provided by customer

### Purchased or leased

Leased

### Duration of use

Approx. 12 months

### Set-up date

January 2019

# EFFICIENT ROOM SOLUTIONS

Three-storey ELA facility  
for LEONHARD WEISS

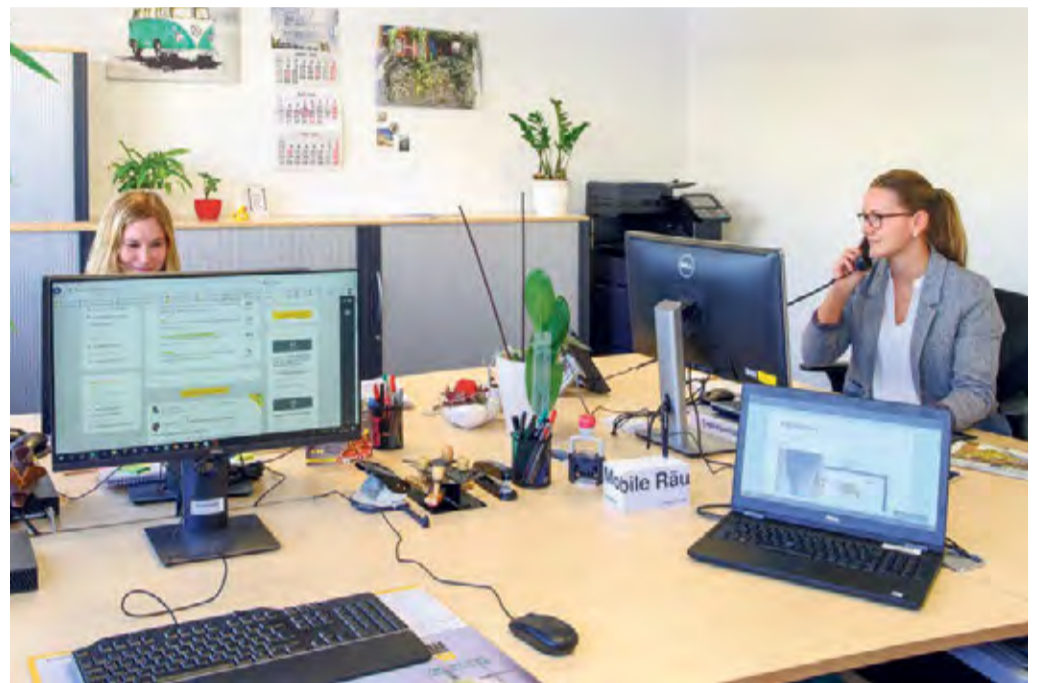


Spacious and functional: the company's own restaurant housed in ELA containers ensures that employees are properly catered for in the coming months.





The mobile room solution using stackable ELA containers stretches across three storeys.



LEONHARD WEISS has expanded its office building with ELA modules.

### Three-storey ELA facility for LEONHARD WEISS

The construction sector is booming – this is especially true of the construction company LEONHARD WEISS, based in Satteldorf in Baden-Württemberg. During the structural expansion of the company’s head office, additional employees will be working in a container-based room solution from ELA for around 14 months.

The three-storey, 1,080 m<sup>2</sup> facility features offices and meeting rooms, common rooms and sanitary facilities on the top two floors and the company’s restaurant on the ground floor. Thanks to split air-conditioning units in all the rooms, the offices can be heated as well as cooled.

The facility is comprised of 60 ELA premium containers with different functions, which are used, for example, as hallways, interior stairwells, fully equipped kitchens and technology rooms. Large window areas and glazed external double doors create a light and friendly atmosphere. The combination of PVC and needle felt in the flooring is both functional and comfortable.

All of the modules were delivered by several ELA trucks with loading cranes. To ensure the modules’ precise alignment and structural safety, mobile concrete foundations and floor panels were used during the assembly stage.

“I think that, as with other customers, the fact that our solutions are known to be economical, efficient and sustainable is a major reason why LEONHARD WEISS chose us,” states ELA Area Sales Manager Stefan Fett. Full service from planning to assembly on site is a key part of ELA Container’s success.

### Details

**Location**  
Satteldorf

**Type and number of containers**  
60 ELA premium containers across three storeys

**Floor space**  
Approx. 1,080 m<sup>2</sup>

**Use**  
Company restaurant with serving area, containers for common rooms, offices, meeting rooms, sanitary facilities and stairwells

**Colour/floor**  
Outer walls: Pebble grey, RAL 7032  
Inner walls and ceiling: White  
Floor: PVC, light grey and carpeting/needle felt, anthracite

**Extra equipment**  
Split air-conditioning units for cooling and heating, presence detectors with in-room controls, mobile concrete foundations and floor panels, cable ducts, kitchens (with refrigerators, sinks, hot-water tanks and dishwashers), glazed double doors, interior stairwells, interior furnishings and fittings provided by customer

**Purchased or leased**  
Leased

**Duration of use**  
14 months

**Set-up date**  
December 2018



4

# SERVING SNACKS AND MEALS

Fig. top

The permanent room solution from ELA is used to serve snacks in the heart of this idyllic place.

Fig. centre

High-quality and space-saving: the ELA container facility is optimally adapted to the requirements of catering.

Fig. bottom

The wood-clad ELA container is in keeping with the natural surroundings of the zoo.



## ELA catering pavilion at the Tiergarten Nürnberg

With its extensive woodland park, rugged red sandstone rock formations, centuries-old trees and idyllic water meadows and ponds, the Tiergarten Nürnberg is one of Europe's most beautiful zoos. Yet as fascinating as the ibexes, lions, tigers and polar bears in this impressive backdrop may be, visitors are bound to feel hunger strike at some point. It is for moments like these that Matthias Stiefried runs the "Grüne Oase" ("Green Oasis"), the zoo's catering establishment. To this end, he has had the use of an ELA sales pavilion for selling his range of drinks, ice creams and pizza since early 2019.

The ELA solution consists of two box-fresh, 20-foot ELA premium containers and an equally new ten-foot ELA premium container. The 45 m<sup>2</sup> space contains pizza ovens, stainless steel work surfaces, a dishwasher, a chrome-nickel sink and various shelving units. "ELA took precise note of my wishes, planned with pinpoint accuracy, and delivered on time," says proprietor Matthias Stiefried.

Customers are served through large plastic sliding windows, which are secured with external roller shutters at night. The facility features a so-called split air-conditioning unit to both heat and cool the interior. One special feature of the electrical installation is automatic circuit breakers for the pizza ovens.

"For this project, we once again delivered the modules for long-term usage with our own trucks, assembled them on site with our own specialists, and handed them over to the customer ready to use," says Harald Denk, Branch Manager at ELA Billigheim. The collaboration with the customer was very pleasant and constructive, he says.

## Details

**Location**  
Nuremberg

**Type and number of containers**  
Three ELA premium containers

**Floor space**  
Approx. 45 m<sup>2</sup>

**Use**  
Sales pavilion

**Colour/floor**  
Outer walls: Pebble grey, RAL 7032  
Inner walls and ceiling: White  
Floor: PVC, light grey

**Extra equipment**  
Reinforced floor and walls, plastic sliding windows, 2,000 x 1,200 mm, double-glazed, with roller shutters, LED lighting, smoke alarm, one sink, stainless-steel work surfaces, split air-conditioning units for cooling and heating, external wooden cladding, interior furnishings and fittings provided by customer

**Purchased or leased**  
Purchased

**Duration of use**  
Permanent

**Set-up date**  
January 2019



5

# A SPACE FOR DIALOGUE AND DISCUSSION

Fig. top

Large window elements with roller shutters create flexible lighting levels.

Fig. bottom

Major interest: queueing at reception in the spacious ELA container.



## ELA at the 21st Family Business Congress

The Witten/Herdecke University recently hosted the 21st Family Business Congress. This year, the theme of the two-day event was “Showing your colours – courageous dialogue” and offered a varied programme of workshops, inspirational talks and panel discussions on this topic. ELA Container has been a partner of the congress for many years now.

“We are a family business par excellence,” says Managing Director Günter Albers. He and his siblings Tim Albers and Liesel Albers-Bentlage are the second generation of the family to manage the business’ affairs. “We are aware of our particular corporate responsibilities as well as our family obligations and welcome the opportunity afforded by the Congress to share experiences,” Albers continues.

The student-based organisation team purposefully chose “Showing your colours” as the guiding theme of this year’s event. “Given the complexity of our current era, it is more important than ever to develop an opinion and show one’s colours through one’s own conduct,” the students’ welcome address stated. The event included talks by motivational speakers and philosophers. The Congress’ sponsor was Tobias Bachmüller of the confectioner Katjes Fassin.

ELA Container presented itself at the event via its products, among other things: three ELA premium containers served as shuttle terminals and a reception room for a smoothly running Congress schedule. Event Director Benjamin Waldow praised the ELA team and was impressed by the service offered: “The collaboration with ELA was seamless. Overly punctual, direct and reliable – simply a great team. Thanks for the support.”

## Details

**Location**  
Witten-Herdecke

**Type and number of containers**  
Three ELA premium containers

**Floor space**  
Approx. 54 m<sup>2</sup>

**Use**  
Shuttle terminal/reception room, common rooms/work rooms

**Colour/floor**  
Outer walls: Pebble grey, RAL 7032  
Inner walls and ceiling: White  
Floor: Vinyl, grey

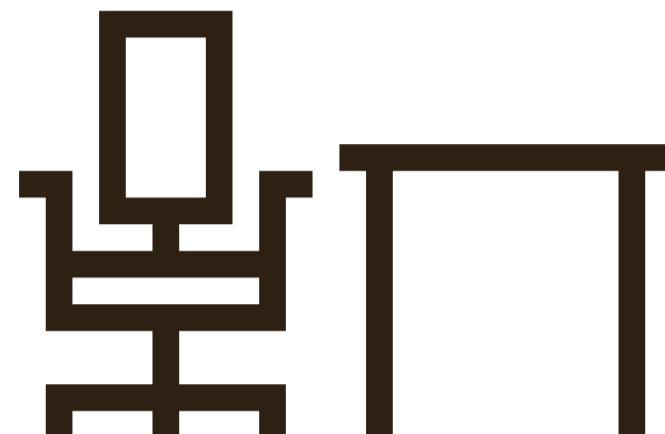
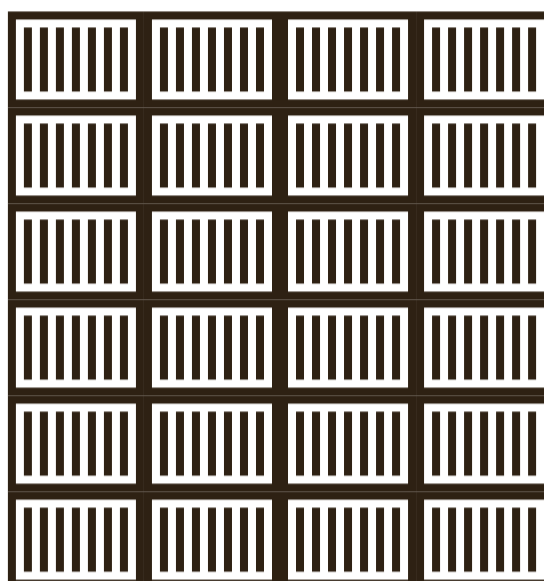
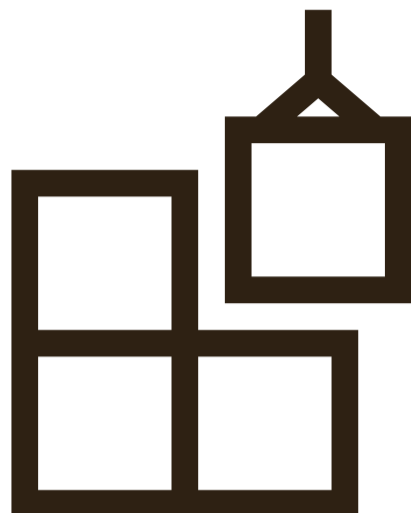
**Extra equipment**  
Supply conduit, split air-conditioning equipment, external aluminium double doors, glazed, 2,000 x 2,100 mm

**Purchased or leased**  
Leased

**Duration of use**  
One week

**Set-up date**  
February 2019

# FACTS



## MOBILE ROOM SOLUTIONS SINCE

# 1972

ELA Container specialises in container-based rooms and buildings – and has done so for over 47 years. The second-generation family company successfully combines tradition and consistency with innovativeness and vision. This allows ELA to impress ever more people with the performance and quality of its mobile room solutions.

## LEASED CONTAINERS

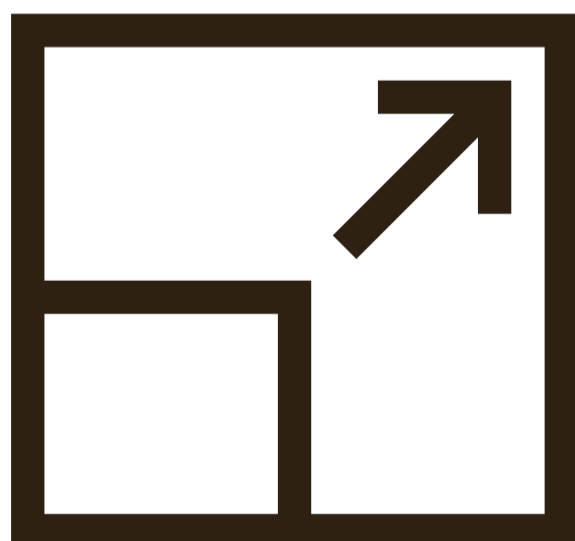
# 30,000

Containers for any application and industry: ELA has 30,000 container units permanently on hand at 15 locations. This means that we can guarantee the speedy availability of temporary room solutions in all sizes and at all times. On request, ELA delivers the leased containers with individual furniture and accessories – this way, the ELA spaces are immediately ready to use.

## ITEMS FOR RENT

# 150,000

Whether you need stairs, risers, acoustic sails, whiteboards, furniture, telephone connections or Internet connections – ELA offers a comprehensive range of accessories for individual interior furnishings. The items are always in store and ready for use without delay.



## ROOM SOLUTIONS

# XS-XXXL

Whether it's standard-sized individual containers or customised, oversized containers – ELA develops and builds containers and container facilities in all sizes and specifications. The custom container construction team is on hand to fulfil any special requirements. Individual customer wishes are made reality with skill and expertise here.

## STACKABILITY

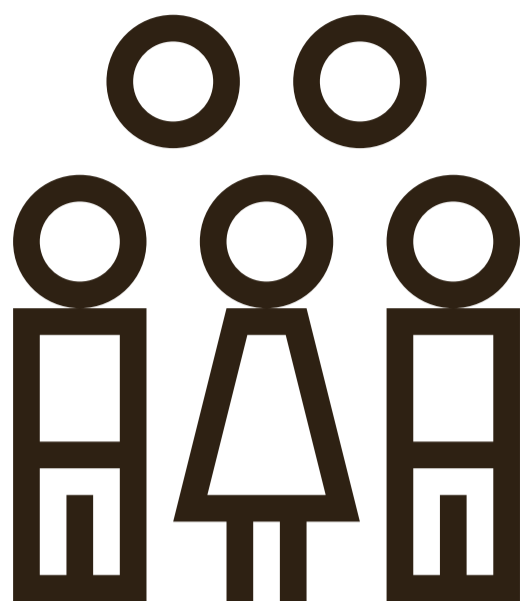
# 4 levels

Set your sights high with ELA Container. Thanks to special statics, the ELA modules can be stacked up to four times. For our customers, this means more space in a smaller area. The individual storeys of the container facilities can be conveniently accessed via an external or internal stairwell.

## AVAILABILITY

# Globally

From Emsland to the world: ELA Container values its close customer relationships. With a strong distribution network in seven different countries, ELA is represented virtually worldwide. There are also over 40 mobile ELA consultants who work with customers to plan their next project during a free on-site appointment.



**EMPLOYEES**

**850**

The ELA team is growing: over 850 dedicated employees ensure seamless workflows and satisfied customers.

**SPECIAL TRUCK WITH LOADING CRANE**

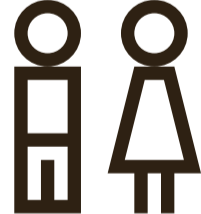
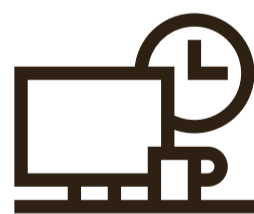
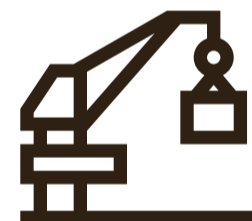
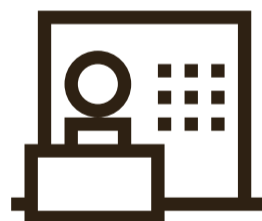
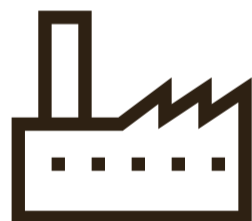
**70**

With the aid of 70 special trucks with loading cranes, the mobile ELA containers can be transported to any location.

**LOCATIONS**

**15**

ELA Container is represented in Germany, Poland, the Netherlands, Belgium, Lithuania, Russia and Dubai.



**APPLICATIONS**

**Any application and industry**

ELA containers are real all-rounders. They can be flexibly combined and individually equipped and are robust and durable, making them suitable for use in virtually all industries. Whether serving as a kindergarten, temporary bank building, school, office or restaurant – the spaces provided by ELA Container are available in all sizes and equipment configurations. Every ELA container is based

on a sturdy, galvanised steel frame finished with sandwich panels and insulation on the walls, ceiling and floor to create a fully fledged mobile room. The modular frames on the front ends of the container can be used to fit combinations of windows, heating technology and air-conditioning units. This provides a good indoor climate at any time within the ELA spaces. ELA equips

the container rooms with furniture and technical accessories so that they can be handed over ready to use. The containers can be delivered with tables, chairs, cupboards, kitchenettes and sanitary facilities as well as complete electrical installations and modern communications technology. This means that ELA container facilities are ready to use in next to no time.

# A TEMPORARY HOME

ELA room solution for audit specialists





## ELA room solution for audit specialists

For reasons of maintenance, safety and environmental protection, many industrial facilities must undergo regular technical audits. Such audit phases are precisely planned to keep stoppage times short and provide the greatest possible availability. This includes infrastructural services such as the punctual and reliable provision of so-called audit container villages.

In a recent example, an industrial customer leased such a container village – comprised of 84 container units – from ELA for around two months. During this period, 450 engineers from professionally qualified service providers worked with the various departments of the facility operator to technically modernise the industrial facility. All the work was coordinated from within a 1,440 m<sup>2</sup>, two-storey room solution from ELA. It contained offices, common rooms and changing rooms, a canteen, break rooms, meeting rooms and sanitary rooms. A large hall area with an interior stairwell provided a convenient and safe connection between the rooms. In this case, the customer included all equipment such as tables, chairs, filing cabinets, desks, office chairs and clothes lockers in the order. ELA also provided state-of-the-art safety technology.

ELA Area Sales Manager Christiane Basler managed the project and was constantly in touch with the customer. The site construction technology department, represented by Peter Schönfeld, was the customer's liaison for the project: "Since 1996, we have often used ELA container solutions for our audit work. During this most recent commission, we were once again very satisfied with the consultation, planning, quoting, delivery, assembly, hand-over and finish of the ELA containers," states Schönfeld.

### Details

**Location**  
Hamm

**Type and number of containers**  
84 ELA premium containers across two storeys

**Floor space**  
Approx. 1,440 m<sup>2</sup>

**Use**  
Audit container village, canteen, offices, common rooms, changing rooms, sanitary container, break rooms

**Colour/floor**  
Outer walls: Pebble grey, RAL 7032  
Inner walls and ceiling: White  
Floor: PVC, light grey

**Extra equipment**  
Smoke alarms, LED lighting, multi-purpose double door, 2,000 x 2,000 mm

**Purchased or leased**  
Leased

**Duration of use**  
Approx. two months

**Set-up date**  
April 2019

Fig. top

Delivered to order: the audit container village is available in customisable configurations.

Fig. centre

ELA Area Sales Manager Christiane Basler hands over the ELA facility to the satisfied customer.

Fig. bottom

Fully equipped with furniture: the containers include clothes lockers.





Fig. top

Quickly and easily assembled: ELA supports the IHK's building modernisation project.

Fig. bottom

The ELA construction site office was assembled across three storeys and fitted with stairs and stairheads.



## ELA containers as construction site office

At Nuremberg's Hauptmarkt square, the "House of Commerce" is nearing completion. Over the past five years, the historic headquarters of IHK Nürnberg für Mittelfranken (Nuremberg Chambers of Commerce for Central Franconia) has been partially rebuilt and comprehensively modernised. ELA has provided a modern container facility as a construction site office for the construction companies' workers.

The Nuremberg-based architecture firm ganzWerk is overseeing the structural monitoring. In order to provide all the companies involved with a modern field office, the team planned the facility using ELA's own online planning tool, ELA Plan. The ELA team were then consulted regarding the configuration, assembly and equipping of the containers.

"We assembled the facility comprised of 15 ELA quality all-rounders in the immediate vicinity of the Hauptmarkt within one and a half days. As space on the construction site is extremely limited, we decided on a three-storey solution," reports Harald Denk, manager of the ELA branch in Billigheim. The project management team at ganzWerk were also very pleased with the result.

The 225 m<sup>2</sup> space is home to offices, common rooms, a first-aid room and sanitary containers. The containers were ordered fully equipped from ELA: desks, office chairs, filing cabinets, filing shelves as well as tables and chairs for the common rooms. The equipment also includes LED lights as well as a modern smoke alarm system.

"Our flexible and modern construction site containers are extremely popular with architects and developers," says Denk. "Customers appreciate the continuous evolution of the containers and ELA's comprehensive hassle-free service."

## Details

**Location**  
Nuremberg

**Type and number of containers**  
15 ELA quality all-rounders across three storeys

**Floor space**  
Approx. 225 m<sup>2</sup>

**Use**  
Construction site office

**Colour/floor**  
Outer walls: Pebble grey, RAL 7032  
Inner walls and ceiling: White  
Floor: PVC, light grey

**Extra equipment**  
Accessible toilet, washbasin with arm lever, drainage tap, safety handles

**Purchased or leased**  
Leased

**Duration of use**  
Eight months

**Set-up date**  
December 2018





Fig. top

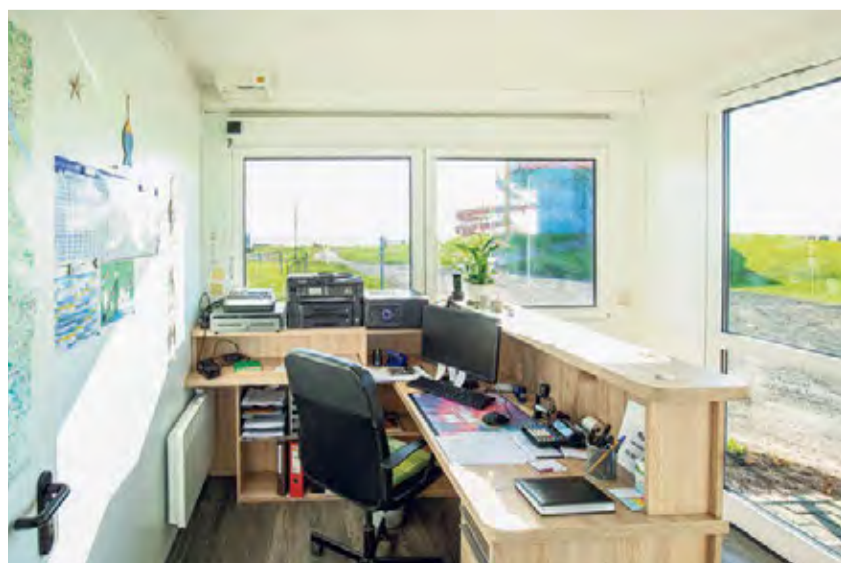
The multifunctional ELA room solution is the port of call for camping guests by the North Sea.

Fig. centre

Seasonal industries particularly benefit from the mobile ELA room containers, which can be flexibly set up.

Fig. bottom

Fully glazed door elements brighten the room and offer employees a clear view.



## ELA functional room on a campsite

The district of Cuxhaven recorded around 6.8 million overnight stays in 2017 – of these, just under 840,000 were at campsites. In order to remain prepared for the constant increase in visitor numbers, the “Wremer Tief” campsite by the North Sea beach is now putting its faith in a new high-quality reception container from ELA.

The ELA premium container proves a true all-rounder here. It serves as a reception for visitors as well as a common room and office for staff. With large windows that create a bright interior and a friendly “moin” (the local dialect word for “hi”), the container already greets new guests from afar. Thanks to its compactness, the module is also very mobile – ideal for moving it to its winter quarters after a successful holiday season.

And with all of this, you can't even tell that the container is a used one. The premium container comes from the ELA used-container centre, where up to 1,000 used containers in all price and quality categories are currently stored. “The campsite’s project managers chose their new reception container during a visit to our exhibition in Haren,” explains Dennis Hagen from the ELA used-container centre.

ELA’s mobile container rooms are especially useful for seasonal industries. In winter, storm floods frequently submerge buildings by the dykes of the North Sea. “This doesn’t happen with a mobile room solution, as it can be safely stored away at the end of the season,” Hagen explains. And so the surf school, beach toilet and beach bar all have one thing in common – they are all based on the flexible container rooms from ELA.

## Details

**Location**  
Wurster Nordseeküste

**Type and number of containers**  
One ELA premium container, used, good condition

**Floor space**  
Approx. 18 m<sup>2</sup>

**Use**  
Reception room, registration desk, office, common room

**Colour/floor**  
Outer walls: Pure white, RAL 9010  
Frame: Wine red, RAL 3005  
Inner walls and ceiling: White  
Floor: PVC, wood look

**Extra equipment**  
Insulating laminated glass, glazed external double door, partition wall with door, interior furnishings and fittings provided by customer

**Purchased or leased**  
Purchased

**Duration of use**  
Permanent during the season

**Set-up date**  
June 2018

# CUSTOMISED CONTAINERS

ELA's custom container  
construction team  
provide precision-tailored  
room solutions



Fig. 01

ELA's expert custom container construction team build the rooms according to customers' wishes.

Fig. 02

The transport options are also already taken into account during the planning stage.

Fig. 03

From extreme heat to the icy cold – custom containers can be adapted to any requirement.



01

## ELA's custom container construction team provide precision-tailored room solutions

Flexible, mobile and with countless potential combinations: the advantages of standard-size room containers are obvious. Yet some industries require customised solutions – for example, in order to safely and securely house pumps, compressors, generators, machines, power units and switch panels. This is where ELA's team of experts from the custom container construction department come into play, constructing container spaces according to customers' wishes.

"This department turns customers' container-room dreams into reality," jokes Markus Arling, a member of the ELA sales team. "The customer chooses the dimensions, equipment, cladding and layout, and we then individually implement these wishes." From the planning stage through to the final construction, the experienced ELA team communicate closely with the customer and advise them on legal and structural stipulations. "For quality-assurance purposes, we create individual structural analyses and conduct weld inspections," says Arling. The experts also take account of the transport options for the respective modules, as the locations at which the containers will be used are often many kilometres away.

A case in point is the current custom order: the container-based mobile engine room will be used in Siberia. "At 14 metres in length and 3.5 metres in width and height, this is an XXXL-size container," says Arling. "The weight of 15 tons is also impressive." The cold climate conditions in Siberia also place great demands on the module's build: comprehensive insulation with mineral wool and a special external coat of paint for temperatures of up to minus 50 degrees are just some of the custom features required.

### Details

**Dimensions**  
14 x 3.5 x 3.5 m (at customer's request)

**Use**  
Heavy, all-steel mobile engine room (empty weight: 15 tons)

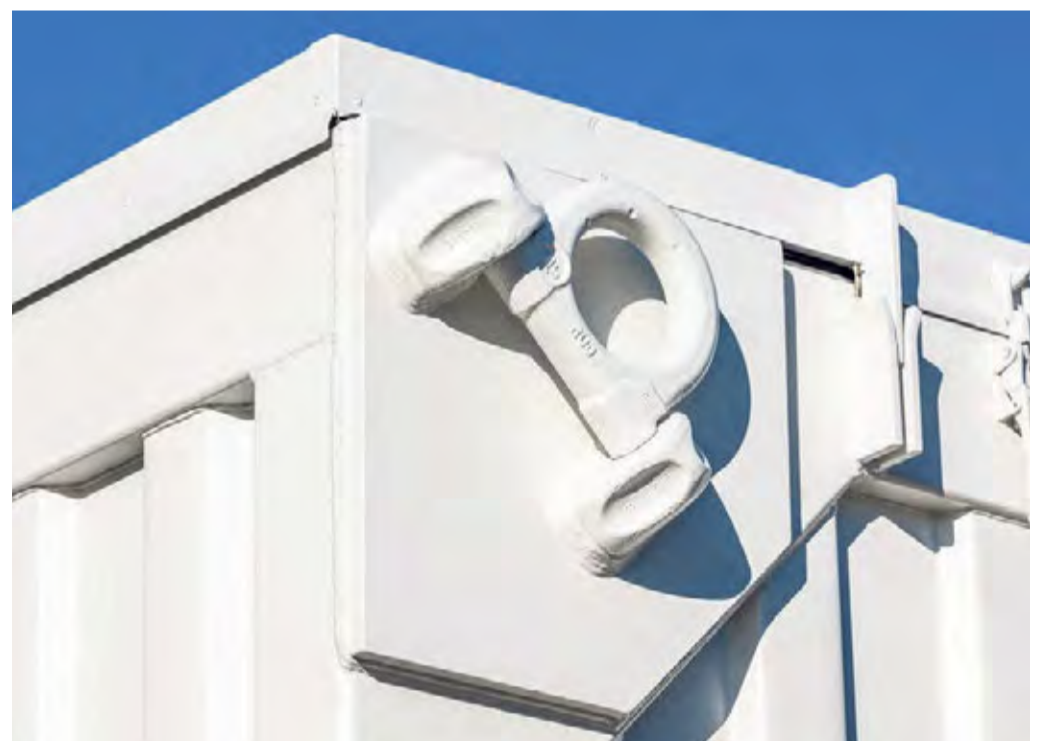
**Colour/floor**  
Outer walls: Pure white, RAL 9010, special paint suitable for external temperatures of up to -50 degrees Celsius  
Inner walls and ceiling: Special insulation, inner cladding with 1.5 mm thick galvanised perforated plating  
Flooring: multiply bonded plywood

**Extra equipment**  
Sturdy frame construction, roof, floor and underfloor insulation, sand-blasted, special coating, removable roof

**Purchased or leased**  
Purchased

**Duration of use**  
Permanent

**Set-up date**  
April 2019



02



03

# COMFORT- ABLE CONTAINER ROOMS

New offices and  
meeting rooms for ELA





Fig. top

ELA's office solutions can be adjusted as needed in terms of the number and height of the containers.

Fig. centre

Moving safely through the rooms, even across different storeys – not a problem with ELA's hallway and stairwell containers.

Fig. bottom

Generously sized with adjusted acoustics and colour scheme: the offices of ELA Container.



## New offices and meeting rooms for ELA

Space at ELA is at a premium – not because there aren't enough containers, but because the company is growing at such speed that the existing office space at the company's headquarters in Harem (Ems) is no longer sufficient.

So what could be more obvious than utilising ELA's own products? Based on the calculated requirements, the company didn't hesitate to plan a room solution based on 40 ELA premium containers across two storeys and assembled it within just two work days. The new ELA office facility provides 730 square metres of floor space and is used by the HR, controlling, process organisation and management systems departments.

The office containers combined on their long sides are used by employees as open-plan offices and meeting rooms. The facility also features a kitchen per storey, sanitary rooms, a storage room and a dedicated heating room. Connecting the different functional areas is a large hallway, with stairwell containers linking the storeys.

Air conditioning, glazed double doors, large double-glazed plastic windows with roller shutters and exterior blinds, and aesthetically pleasing yet robust needle-felt flooring provide comfort and security. LED lights and smoke alarms round off the technical installations.

"Alongside employee satisfaction, a positive side effect of the office containers is that our visitors gain an immediate impression of the comfort and possibilities offered by our room solutions," says ELA Managing Director Günter Albers.

## Details

### Location

Harem (Ems)

### Type and number of containers

40 ELA premium containers across two storeys

### Floor space

Approx. 730 m<sup>2</sup>

### Use

Offices and meeting rooms

### Colour/floor

Outer walls: Pebble grey, RAL 7032  
Inner walls and ceiling: White  
Floor: Carpeting/needle felt, anthracite

### Extra equipment

LED lighting, smoke alarm, stairwell containers, split air-conditioning units for cooling and heating, glazed external double doors, acoustic ceilings, exterior blinds, special furnishings

### Duration of use

Permanent

### Set-up date

December 2018



# INTERNATIONALLY POSITIONED

ELA delivers containers to construction sites in Dubai

Fig. top

The construction site office at Dubai Creek is comprised of 32 ELA containers.

Fig. 02

Keeping a cool head: pleasant indoor climate thanks to air conditioning.

Fig. 03

The interior and exterior colour scheme of the container facilities can be individually adapted to the customer's corporate design.

Fig. 04

Spacious and light: project management offices using ELA modules provide a suitable working environment.





## ELA delivers containers to construction sites in Dubai

Bigger, taller, further: the Emirate of Dubai is known for its exceptional buildings and feats of architecture. European companies also benefit from the Arabs' ambitious construction projects. Construction site facilities that meet the demands imposed by the extreme climate conditions in the Emirate are especially sought-after. For its numerous projects in Dubai, the construction company Six Construct – a subsidiary of the Belgian BESIX Group – therefore chose ELA Container as its partner for high-quality and innovative office spaces for use at construction sites.

The task was to design modular and efficient project management offices that facilitate flowing work processes, reduce energy usage and provide employees with a pleasant working environment. In close collaboration with the customer, ELA developed a series of two-storey facilities based on a choice of 32, 48 or 72 ELA quality all-rounders, which can be expanded, reduced or cost-effectively transported to other construction sites as desired. Mineral wool insulation, LED lighting and energy-saving air-conditioning units provide the greatest energy efficiency. A proportion of the required energy is generated via solar-panel units.

“After we delivered the first container facility, the customer was so pleased that they immediately ordered another 320 units,” explains Yamile Chapman, Project Manager at ELA Middle East. The ELA team delivered and assembled the individual facilities in record time. “We are pleased to be supporting Six Construct with some of the most prestigious construction projects in Dubai, such as The Royal Atlantis hotel on the Palm Jumeirah island,” says Chapman.

Depending on the respective design, the ELA facilities contain project management offices, meeting rooms, sanitary facilities, reception rooms, canteens, server rooms and first-aid rooms. Some facilities also serve as mosques. One good example is the construction site office comprised of ELA containers at Dubai Creek, Al Jadaf. The 32 ELA quality all-rounders provide 480 square metres of floor space for offices, meeting rooms with special glass elements, and high-quality sanitary facilities.

Since 2016, ELA has been represented in Dubai with its own office. Alongside flexible room solutions for construction sites, ELA Middle East has already leased and sold container rooms to hotels and events companies.

### Details

**Location**  
Dubai

**Type and number of containers**  
32 ELA quality all-rounders across two storeys

**Floor space**  
Approx. 480 m<sup>2</sup>

**Use**  
Construction site office/site management office

**Colour/floor**  
Outer walls:  
Customer's CD colour scheme  
Inner walls and ceiling:  
Customer's CD colour scheme  
Floor: PVC, grey

**Extra equipment**  
Air conditioning, mineral wool insulation, colours based on customer's CD

**Purchased or leased**  
Purchased

**Set-up date**  
June 2018



03



04

# DE

## **ELA Container GmbH Headquarters**

Zeppelinstraße 19-21  
49733 Haren (Ems)  
Tel +49 5932 506-0  
Fax +49 5932 506-10  
www.container.de  
info@container.de

## **ELA Container GmbH Used-container centre**

Im Industriepark 20 –  
Eurohafen  
49733 Haren-Emmeln  
Tel +49 5932 506-556  
Fax +49 5932 506-10  
www.container.de  
kontakt@ela-sales.de

## **ELA Container Sales GmbH**

Im Industriepark 20 –  
Eurohafen  
49733 Haren (Ems)  
Tel +49 5932 506-556  
Fax +49 5932 506-10  
www.container.de  
kontakt@ela-sales.de

## **ELA Container GmbH Groß Ippener**

Am Gewerbegebiet 35  
27243 Groß Ippener  
Tel +49 4224 1414-300  
Fax +49 4224 1414-310  
www.container.de  
info@container.de

## **ELA Container GmbH Frankenberg**

Zum Hammerberg 1  
09669 Frankenberg  
Tel +49 37206 851-0  
Fax +49 37206 851-10  
www.container.de  
info@container.de

## **ELA Container GmbH Billigheim**

Schefflenztastraße 84  
74842 Billigheim  
Tel +49 6265 92775-0  
Fax +49 6265 92775-10  
www.container.de  
info@container.de

## **ELA Container GmbH Moosburg**

Naustraße 1  
85368 Moosburg  
Tel +49 8762 7266-800  
Fax +49 8762 7266-810  
www.container.de  
info@container.de

## **ELA Container Offshore GmbH**

Zeppelinstraße 32  
49733 Haren (Ems)  
Tel +49 5932 7323-500  
Fax +49 5932 7323-510  
www.ela-offshore.com  
info@ela-offshore.com

# BE

## **ELA Container Belgium BVBA**

Eurolaan 9  
9140 Temse  
Tel +32 3 7719669  
www.ela-container.be  
info@ela-container.be

# NL

## **ELA Container Nederland BV**

Rouaanstraat 39  
9723 CC Groningen  
Tel +31 50 3182247  
Fax +31 50 3185129  
www.ela-container.nl  
info@ela-container.nl

## **ELA Container Nederland BV**

Welpaalkade 5  
3197 KR Botlek-  
Rotterdam  
Tel +31 10 4165733  
Mobil +31 6 20023412  
www.ela-container.nl  
info@ela-container.nl

# PL

## **ELA Container Polska Sp. z o.o.**

ul. Łukasiewiczza 6  
05-200 Wołomin  
Tel +48 22 4174190  
Fax +48 22 4688700  
www.ela-container.pl  
info@ela-container.pl

## **ELA Container Polska Sp. z o.o./oddz. Wrocław**

ul. Kupiecka 10  
52-427 Wrocław  
Tel +48 71 3336532  
Fax +48 71 3336532  
www.ela-container.pl  
info@ela-container.pl

# LT

## **ELA Container Lietuva UAB**

Tilžes g. 60  
91108 Klaipėda  
Tel +370 46 492066  
Fax +370 46 492067  
www.ela-container.lt  
info@ela-container.lt

# UAE

## **ELA Container Middle East FZCO**

Plot No. S50914B  
Jebel Ali Freezone South  
Dubai  
P.O. Box 263905  
Tel +971 4 8807015  
www.ela-container.ae  
info@ela-container.ae

# RU

## **OOO ELA Container RU**

ul. Koroleva 4  
Building 12, Office 22  
249031 Obninsk  
Tel +7 48439 57247  
www.ela-container.ru  
info@ela-container.ru

# WWW. ELA-CONTAINER. COM